

E.Q.: WHAT IS THE DIFFERENCE BETWEEN
SKETCH, DRAW, AND CONSTRUCT?

SKETCH: DRAWN WITHOUT THE AID OF TOOLS.

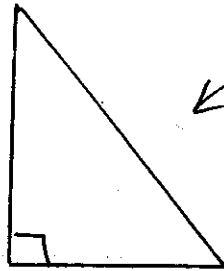
NO STRAIGHT EDGE, RULER, COMPASS, PROTRACTOR,
ETC.

EXAMPLE:



DRAW: DRAWN WITH THE AID OF ALL AVAILABLE TOOLS.

EXAMPLE:



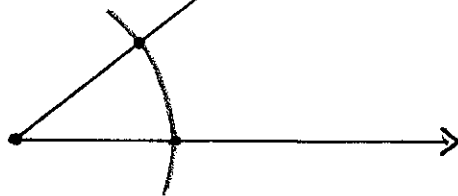
WITH AID
OF PROTRACTOR

CONSTRUCT: DRAWN ONLY USING A STRAIGHT EDGE (NOT
RULER) AND A COMPASS.

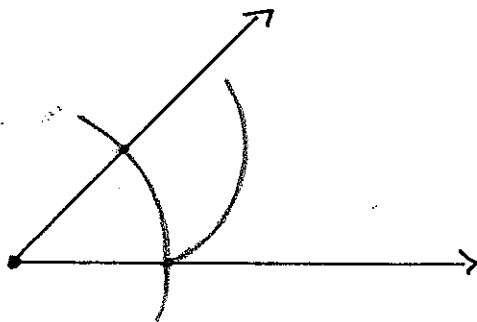
EQUILATERAL Δ :

CONSTRUCTION OF AN ANGLE BISECTOR:

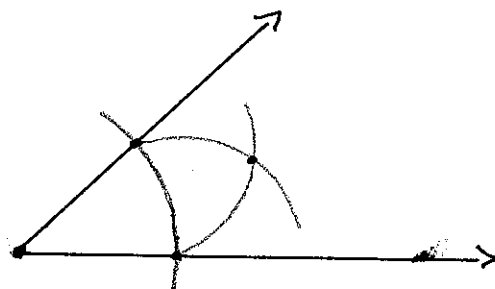
STEP 1: SWOOP COMPASS FROM VERTEX ACROSS BOTH RAYS. MARK INTERSECTIONS.



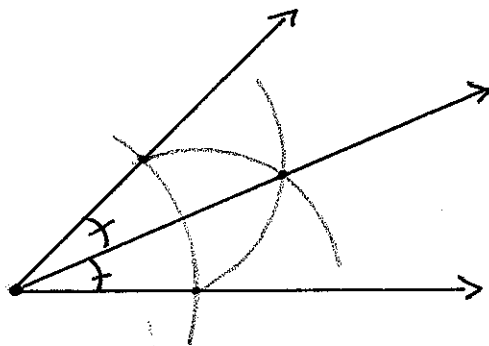
STEP 2: SWOOP COMPASS FROM ONE INTERSECTION POINT.



STEP 3: REPEAT STEP 2 FROM OTHER INTERSECTION POINT. MARK INTERSECTION POINT.

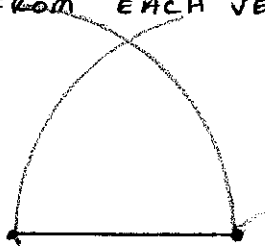


STEP 4: USING A STRAIGHTEDGE, CONNECT VERTEX TO FINAL INTERSECTION POINT.

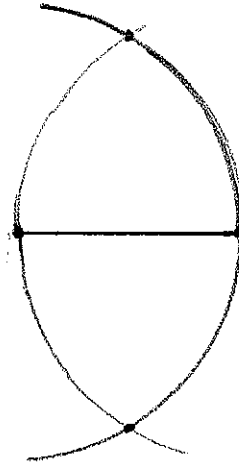


CONSTRUCTION OF A PERPENDICULAR BISECTOR:

STEP 1: SWOOP FROM EACH VERTEX



STEP 2: SWOOP DOWN FROM EACH VERTEX
MARK INTERSECTION POINTS.



STEP 3: WITH A STRAIGHT EDGE, CONNECT INTERSECTION POINTS

